



The Guided Float Switch 2282 is designed for economical control of liquids in tanks. The switch is remarkable for its maintenance-free compact design. The reed contacts have high switch capacity.

The reed contact in the sensor body is switched with a magnet. The switching function (N/O contact and N/C contact) is determined by the installation position. The function can be changed by simply turning 180°.

#### Function

The 2282 level switch is specially suited for simple, mechanical monitoring of highest and lowest fill levels. Its compact construction allows it to be installed into very small tanks.

With its housing made of PP or PVDF, the 2282 is especially resistant to a number of chemicals.



## Features

- Optimized chemical compatibility
- Very compact design
- PP and PVDF version available
- For small tanks

CE RoHS

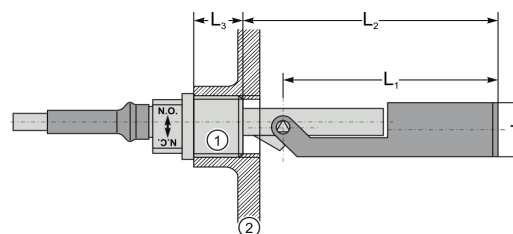
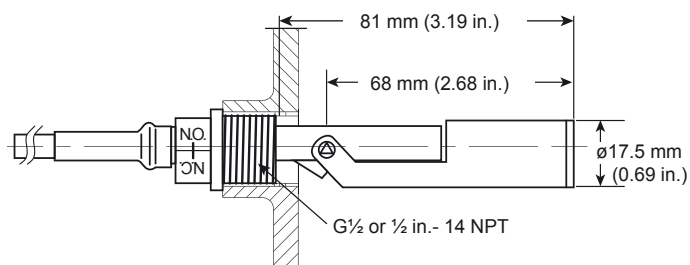
## Applications

- Cooling Water
- Demineralized Water
- Water/Glycol Solutions
- Chemicals
- Especially fit for small tanks

## Specifications

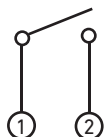
General	
Type	2282-Y-YY-Y
Environmental	
Max. Temperature	-65 °C to +100 °C (-85 °F to +212 °F)
Max. Pressure	1 MPa (10 bar) 145 psi
Medium Density	>0.6 g/cm <sup>3</sup>
Enclosure	
Enclosure/Float material	PP or PVDF
Cable Material	PVC
Protection Rating	IP 68
Process Connection	½ in. BSP, NPT
Electrical	
Output	Dry reed contact
Contact Resistance	Max. 120 mΩ
Maximum Nominal Voltage	230 V AC/DC
Maximum Nominal Current	2 A / 40 VA
Cable Type	AWG 20, 2-wire, PVC, 1 m
Switching Contact	N/O or N/C depending on the installation
Standard and Approvals	
General Approvals	CE, RoHS

## Dimensions



## Wiring

### Connection Configuration

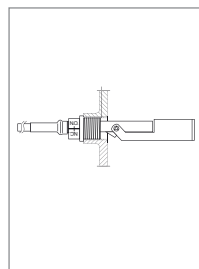


No.	Data
1	Brown
2	Black

No.	Data
L1	68 mm
L2	81 mm
L3	15 mm
d	Ø 17,5 mm
1	G ½" or ½" - 14 NPT
2	Container Wall

Max. 230 V 2A contact rating

## Ordering Information



Mfr. Part No.	Code	Description
Versions with BSP thread		
2282-P-6CB	<b>159 300 261</b>	PP body, cable, 1/2" BSP thread
2282-V-6CB	<b>159 300 263</b>	PVDF body, cable, 1/2" BSP thread
Versions with NPT thread		
2282-P-6CN	<b>159 300 265</b>	PP body, cable, 1/2" NPT thread
2282-V-6CN	<b>159 300 267</b>	PVDF body, cable, 1/2" NPT thread